

Timescales



Survey took place between 18 November 2024 and 9 January 2025

Questionnaire



Co-designed by Exeter City Council and Enventure Research, informed by results from the latest resident survey

Interviewer led survey



Administered via telephone and face-to-face interviews with 1,101 Exeter residents aged 16+

Quotas



Quotas set to achieve a representative sample based on gender, age and area

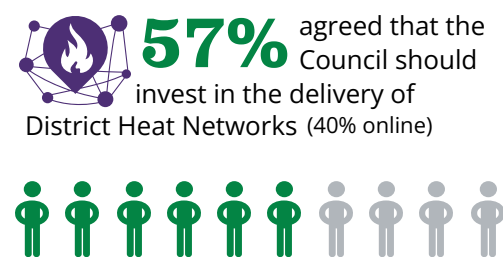
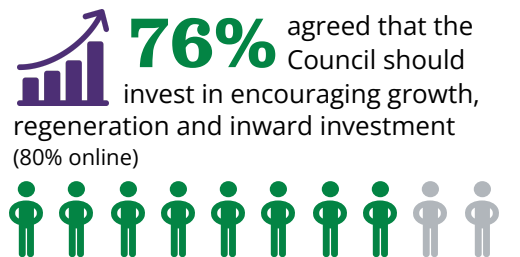
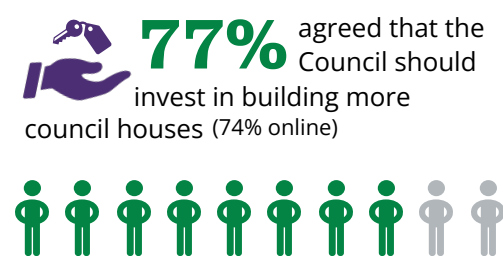
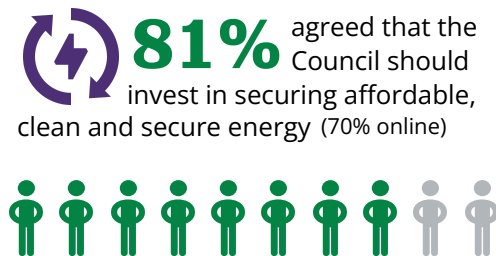
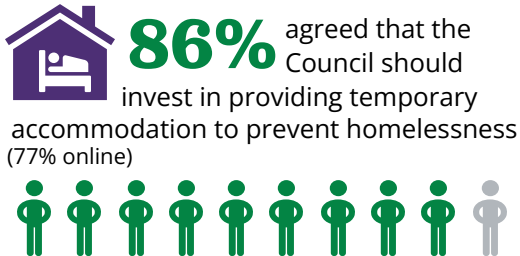
Online survey



Online survey open to all who live, visit and study in Exeter received 597 responses

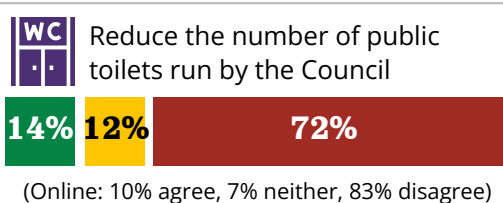
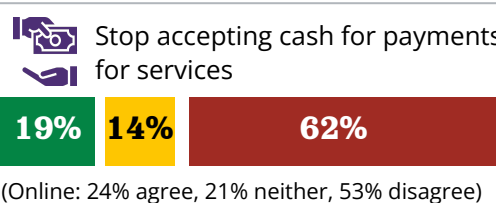
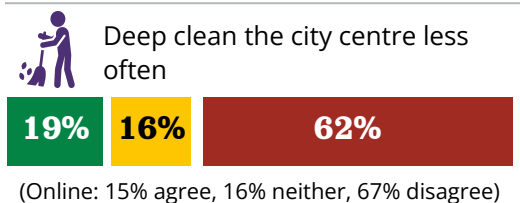
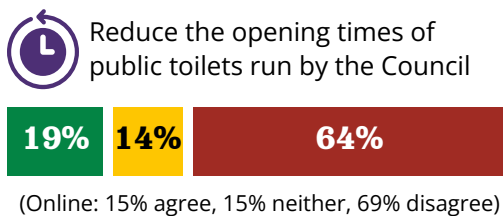
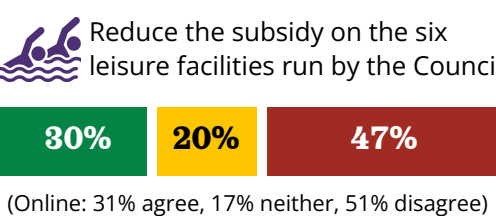
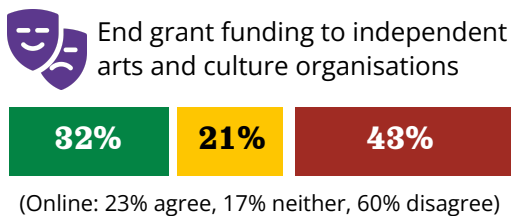
The figures in this report are from the **representative survey** of 1,101 Exeter residents. Some results from the online survey have been included.

What should the Council invest in? *

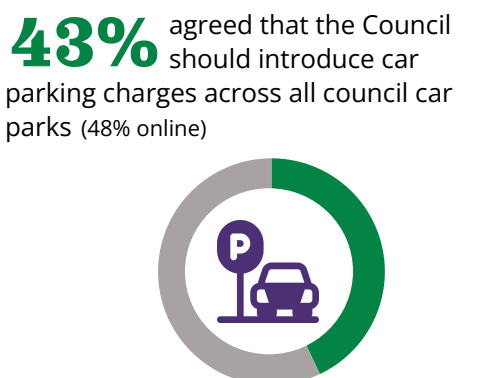
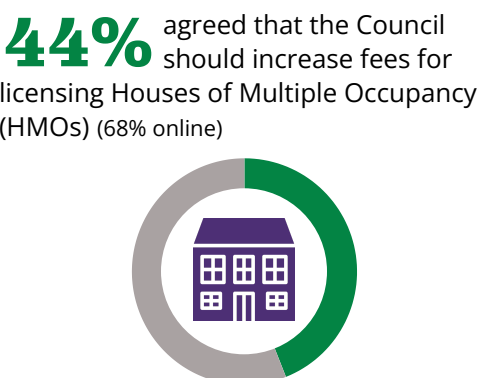
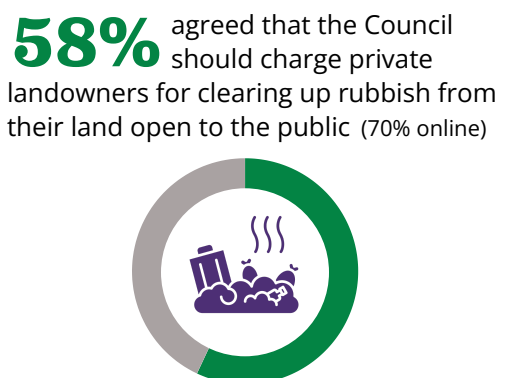


How should the Council reduce costs? ^

■ Total agree ■ Neither ■ Total disagree



How should the Council raise money? †



* Top six options with the highest agreement levels are shown.

^ Don't know responses are not shown.

† Top three options with the highest agreement levels are shown.

Corporate Plan priorities: Local economy

1. Highest priority



More people feeling safe in the city at night

2. Second priority



More inward investment in the city

3. Third priority



Sustainable quality sports and leisure facilities

4. Lowest priority



Great museums, theatres, arts and cultural facilities and events

Corporate Plan priorities: Sustainable environment

1. Highest priority



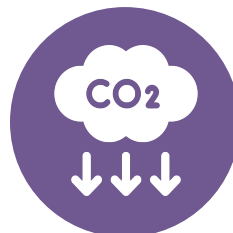
Cleaner streets and reducing litter

2. Second priority



Increased recycling rates

3. Third priority



Reduced carbon emissions from council buildings and services

4. Lowest priority



Removing graffiti

Corporate Plan priorities: People

1. Highest priority



More services targeted to people on low incomes

2. Second priority



Less anti-social behaviour

3. Third priority



Council grants for community groups

4. Lowest priority



More people walking and cycling

Corporate Plan priorities: Homes

1. Highest priority



Disabled facilities and warm home grants

2. Second priority



More affordable housing

3. Third priority



More social/council houses

4. Lowest priority



Less homelessness and use of temporary accommodation

Corporate Plan priorities: Well-run council

1. Highest priority



More engagement with residents when making decisions and improving services

2. Second priority



Best value for money services

3. Third priority



More accessible information about council services

4. Lowest priority



More council services online and self-service